

UNI WHEEL 736

SOLID CARBIDE KNURLING WHEELS

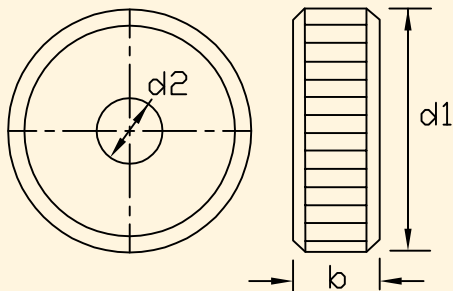
NOTE : The above knurling wheel be supplied in St. profile grooves angle in type AA Style.

Also offered on request:

(a)A TIN coating TiAIN coating, tialn coated .(b)Any special dia thickness.

(c)Cross grooves.(d) Different angle & different shapes like :AA, BL 1 5, B L 3 0, BL 4 5, B R 1 5, B R 3 0, B R 4 5, C, E, KE, KV,HV, HHV, HHE, HE, GH30, GE45, GV30, GV45(e) Intermediate sizes.

WHILE ORDERING PLEASE MENTION ORDER NO.



Order No.	OD d1	Width b	Pitch P	1D d2	NO. OF. TEETH FOR		α	Prices
					AA,KE	BL,ER,		
736 - 0151	15	4	0.5	4	94	82	90	
736 - 0152	15	5	0.5	4	94	82	90	
736 - 0153	15	6	0.5	4	94	82	90	
736 - 0154	15	4	0.6	4	78	68	90	
736 - 0155	15	5	0.6	4	78	68	90	
736 - 0156	15	6	0.6	4	78	68	90	
736 - 0157	15	4	0.8	4	59	51	90	
736 - 0158	15	5	0.8	4	59	51	90	
736 - 0159	15	6	0.8	4	59	51	90	
736 - 0160	15	4	1.0	4	48	41	90	
736 - 0161	15	5	1.0	4	48	41	90	
736 - 0162	15	6	1.0	4	48	41	90	
736 - 0163	15	4	1.2	4	39	34	90	
736 - 0164	15	4	1.2	4	39	34	90	

Contd

(UNI CUT 736) SOLID CARBIDE KNURLING WHEELS

Order No.	OD d1	Width b	Pitch P	1D d2	NO. OF. TEETH FOR		α	Prices
					AA,KE	BL,ER,		
736 - 0165	15	4	1.2	4	39	34	90	
736 - 0166	15	4	1.6	4	29	25	90	
736 - 0167	15	5	1.6	4	29	25	90	
736 - 0200	20	6	0.5	6	126	109	90	
736 - 0201	20	8	0.5	6	126	109	90	
736 - 0202	20	10	0.5	6	126	109	90	
736 - 0203	20	6	0.6	6	105	91	90	
736 - 0204	20	8	0.6	6	105	91	90	
736 - 0205	20	10	0.6	6	105	91	90	
736 - 0206	20	6	0.8	6	79	68	90	
736 - 0207	20	8	0.8	6	79	68	90	
736 - 0208	20	10	0.8	6	79	68	90	
736 - 0209	20	6	1.0	6	63	54	90	
736 - 0210	20	8	1.0	6	63	54	90	
736 - 0211	20	10	1.0	6	63	54	90	
736 - 0212	20	6	1.2	6	52	45	90	
736 - 0213	20	8	1.2	6	52	45	90	
736 - 0214	20	10	1.2	6	52	45	90	
736 - 0215	20	6	1.6	6	39	34	90	
736 - 0216	20	8	1.6	6	39	34	90	
736 - 0217	20	10	1.6	6	39	34	90	
736 - 0218	20	6	0.6	6	105	91	90	
736 - 0219	20	8	0.6	6	105	91	90	
736 - 0220	20	10	0.6	6	105	91	90	

Univarsal Tool Manufactures Special Knurls as per Customer Drawings & knurls Shapes

Contd