

UNI REAM 601

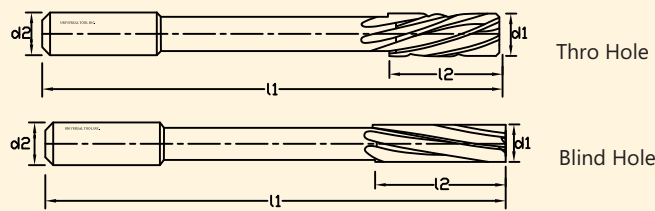
SOLID CARBIDE CHUCKING REAMERS

THRO COOLANT / NON THRO COOLANT

GEOMETRY AND APPLICATION

Similar to DIN 212 form D for H7 fit tolerance with internal through coolant unequal spacing of teeth. For -Solid Carbide through Coolant Shank will be according to DIN6535HA Cylindrical shank w/o tang. For Solid Carbide Reamer diameters above 5.5 with tang. While ordering please mention through coolant required or W/O through coolant tools. General purpose. To produce hole of precise roundness and excellent surface finish.

Also offered on intermediate sizes on request.



Order No.	d1 mm	No. Of teeth	L1 mm	L2 mm	d2 mm	Prices
601- 0020	2.00	4	49	11.0	2.0	
601- 0022	2.20	4	53	12.-0	2.0	
601- 0025	2.50	4	57	14.0	2.5	
601- 0028	2.80	4	61	15.0	2.8	
601- 0030	3.00	4	61	15.0	3.0	
601- 0032	3.20	4	65	16.0	3.2	
601- 0035	3.50	4	70	18.0	3.5	
601- 0040	4.00	4	75	19.0	4.0	
601- 0045	4.50	6	80	21.0	4.5	
601- 0050	5.00	6	86	23.0	5.0	
601- 0055	5.50	6	93	26.0	5.6	
601- 0060	6.00	6	93	26.0	5.6	
601- 0065	6.50	6	101	28.0	6.3	
601- 0070	7.00	6	109	31.0	7.1	
601- 0075	7.50	6	109	31.0	7.1	
601- 0080	8.00	6	117	33.0	8.0	
601- 0085	8.50	6	117	33.0	8.0	
601- 0090	9.00	6	125	36.0	9.0	
601- 0095	9.50	6	125	36.0	9.0	
601- 0100	10.00	6	133	38.0	10.0	
601- 0105	10.50	6	133	38.0	10.0	
601- 0110	11.00	6	142	41.0	10.0	
601- 0115	11.50	6	142	41.0	10.0	
601- 0120	12.00	6	151	44.0	10.0	
601- 0125	12.50	6	151	44.0	10.0	
601- 0125	12.50	6	151	44.0	10.0	
601- 0130	13.00	6	151	44.0	10.0	

Contd

(UNI REAM 601) SOLID CARBIDE CHUCKING REAMERS

Order No.	d1 mm	No. Of teeth	L1 mm	L2 mm	d2 mm	Prices
601- 0135	13.50	8	160	47.0	12.5	
601- 0140	14.00	8	160	47.0	12.5	
601- 0145	14.50	8	162	50.0	12.5	
601- 0150	15.00	8	162	50.0	12.5	
601- 0155	15.50	8	170	52.0	12.5	
601- 0160	16.00	8	170	52.0	12.5	
601- 0170	17.00	8	175	54.0	14.0	
601- 0180	18.00	8	182	56.0	14.0	
601- 0190	19.00	8	189	58.0	16.0	
601- 0200	20.00	8	195	60.0	16.0	
601- 0220	22.00	8	200	62.0	20.0	
601- 0240	24.00	8	200	62.0	20.0	
601- 0260	26.00	8	200	62.0	20.0	
601- 0280	28.00	8	200	62.0	20.0	
601- 0300	30.00	8	200	62.0	20.0	
601- 0320	32.00	8	200	62.0	20.0	
601- 0340	34.00	8	200	62.0	20.0	
601- 0360	36.00	8	200	62.0	20.0	
601- 0380	38.00	8	200	62.0	20.0	
601- 0400	40.00	8	200	62.0	20.0	
601- 0450	45.00	8	200	62.0	20.0	
601- 0500	50.00	8	200	62.0	20.0	

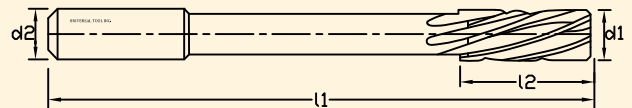
UNI REAM 616

SOLID CARBIDE REAMER

(STUB SERIES) Thro Coolant

The tool will be supplied in LH helix RH cutting through coolant. For H7 Fit Bore.

Also offered on intermediate sizes on request.



Order No.	Dia Ød1	Dia d2	L1	L2	Z	Prices
616- 0040	4	3.55	56	20	6	
616- 0045	4.5	4	63	22	6	
616- 0050	5	4	63	22	6	
616- 0055	5.5	5	63	22	6	
616- 0060	6	5	63	22	6	

Contd

Contd

Contd

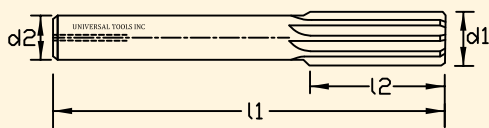
(UNI REAM 616) SOLID CARBIDE REAMER

Order No.	Dia	Dia	L1	L2	Z	Prices
616- 0065	6.5	5	63	22	6	
616- 0070	7	6.3	71	25	6	
616- 0080	8	6.3	71	25	6	
616- 0090	9	8	71	25	6	
616- 0100	10	8	71	25	6	
616- 0110	11	10	80	28	6	
616- 0120	12	10	80	28	6	
616- 0130	13	10	80	28	6	
616- 0140	14	12.5	90	32	8	
616- 0150	15	12.5	90	32	8	
616- 0160	16	12.5	90	32	8	
616- 0170	17	12.5	90	32	8	
616- 0180	18	16	100	36	8	
616- 0190	19	16	100	36	8	
616- 0200	20	16	100	36	8	
616- 0220	22	20	112	40	8	
616- 0240	24	20	112	40	8	
616- 0250	25	20	112	40	8	
616- 0260	26	20	112	40	8	
616- 0280	28	20	125	45	10	
616- 0300	30	20	125	45	10	
616- 0320	32	20	125	45	10	

UNI REAMER 619

SOLID CARBIDE

BURNISHING REAMER (CE)



Order No.	D1/H7	D2/H7	L1	L2	Prices
619- 0030	3.00	3.00	50	16	
619- 0035	3.50	3.00	50	16	
619- 0040	4.00	4.00	56	20	
619- 0045	4.50	4.00	63	22	
619- 0050	5.00	4.00	63	22	
619- 0055	5.50	5.00	63	22	
619- 0060	6.00	5.00	63	22	
619- 0065	6.50	5.00	63	22	
619- 0070	7.00	8.00	71	25	
619- 0080	8.00	8.00	71	25	
619- 0090	9.00	8.00	71	25	

Contd

Contd

(UNI REAMER 619) SOLID CARBIDE BURNISHING REAMER (CE)

Order No.	d1/H7	d2/H7	L1	L2	Prices
619- 0010	10.00	10.00	71	25	
619- 0011	11.00	10.00	75	25	
619- 0012	12.00	12.00	75	25	
619- 0013	13.00	14.00	75	25	
619- 0014	14.00	14.00	90	32	
619- 0016	16.00	16.00	90	32	
619- 0018	18.00	18.00	90	32	
619- 0020	20.00	20.00	100	32	
619- 0022	22.00	22.00	100	40	
619- 0024	24.00	24.00	100	40	
619- 0025	25.00	25.00	100	45	
619- 0026	26.00	25.00	100	45	
619- 0028	28.00	25.00	100	45	
619- 0030	30.00	25.00	100	45	
619- 0032	32.00	32.00	100	45	
619- 0035	35.00	32.00	100	45	
619- 0040	40.00	32.00	100	45	

UNI REAMER 624

SOLID CARBIDE DRILL CUM REAMER

NOTE : Intermediate size on request.

Also available on request in thro' coolant.

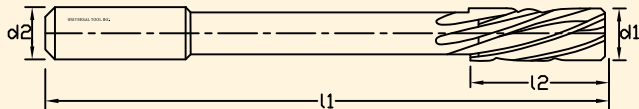


Order No.	D/H7/H8	SHD d	FL	OAL L1	Prices
624- 0030	3	6	28	60	
624- 0040	4	6	36	75	
624- 0050	5	6	44	80	
624- 0060	6	6	44	80	
624- 0070	7	8	50	90	
624- 0080	8	8	50	90	
624- 0090	9	10	60	105	
624- 0010	10	10	60	105	
624- 0011	11	12	65	110	
624- 0012	12	12	65	110	
624- 0014	14	14	70	120	
624- 0016	16	16	80	130	
624- 0018	18	18	90	143	
624- 0020	20	20	101	150	
624- 0022	22	22	101	150	
624- 0025	25	25	101	150	
624- 0028	28	28	101	150	
624- 0032	32	32	101	150	

UNI REAMER 625

SOLID CARBIDE REAMER

NOTE : Intermediate size on request.
Also available on request in thro' coolant.



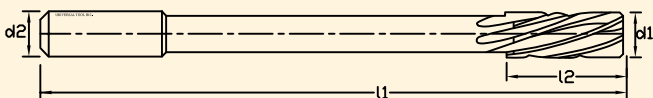
Order No.	d1 H7	d2	L1	L2	L3
625 - 0040	4	4	60	16	35
625 - 0045	4.5	6	70	16	45
625 - 0050	5	6	70	16	45
625 - 0055	5.5	6	80	16	55
625 - 0060	6	6	80	16	55
625 - 0070	7	8	90	18	60
625 - 0080	8	8	90	18	60
625 - 0090	9	8	90	18	60
625 - 0100	10	10	115	20	75
625 - 0110	11	10	115	20	75
625 - 0120	12	12	130	20	80
625 - 0130	13	12	130	20	80
625 - 0140	14	12	130	20	80
625 - 0150	15	12	130	20	80
625 - 0160	16	16	140	25	90
625 - 0180	18	16	140	25	90
625 - 0200	20	16	140	25	90

UNI REAMER 626

SOLID CARBIDE REAMER

NOTE : Intermediate size on request.
Also available on request in thro' coolant.

L3 = Hole depth



Order No.	d1 H7	d2	L1	L2	L3
626 - 0030	3	D	90	14	70
626 - 0035	3.5	D	90	14	70
626 - 0040	4	4	105	16	80
626 - 0045	4.5	4.5	105	16	80
626 - 0050	5	5	115	16	90

Contd

Contd

(UNI REAMER 626) SOLID CARBIDE REAMER

Order No.	d1 H7	d2	L	L1	L2
626 - 0055	5.5	5.5	115	16	90
626 - 0060	6	6	130	16	100
626 - 0070	7	7	140	18	110
626 - 0080	8	8	160	18	130
626 - 0090	9	9	175	18	140
626 - 0100	10	10	190	20	150
626 - 0110	11	10	190	20	150
626 - 0120	12	12	220	22	170
626 - 0130	13	12	220	22	170
626 - 0140	14	12	220	22	170
626 - 0150	15	12	220	22	170
626 - 0160	16	16	230	25	180
626 - 0180	18	16	230	25	180
626 - 0200	20	16	230	25	180

UNI ALU REAMER 627

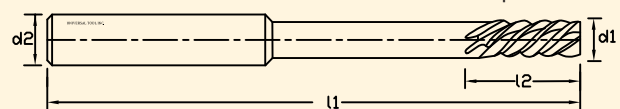
SOLID CARBIDE REAMER For(Aluminium)

(45° Helix Angle)

NOTE : Intermediate size on request.

Also available on request in thro' coolant.

L3 = Hole depth



Order No.	d1 H7	d2	L1	L2	L3
627 - 0010	1	3	38	12	15
627 - 0015	1.5	3	43	18	26
627 - 0020	2	3	49	19	31
627 - 0025-30	2.5-3.0	3	57	20	38
627 - 0035	3.5	4	57	20	38
627 - 0040	4	4	75	24	51
627 - 0045	4.5	4.5	80	25	55
627 - 0050	5	5	86	26	60
627 - 0055	5.5	5.5	93	27	66
627 - 0060-65	6.0-6.5	6	101	28	73
627 - 0070-75	7.0-7.5	7	109	31	80
627 - 0080-85	8.0-8.5	8	117	33	86
627 - 0090-95	9.0-9.5	9	125	36	91
627 - 0100	10	10	133	38	99
627 - 0105-110	11	10.5	133	38	99
627 - 0115-120	12	11.5	151	44	106
627 - 0125-130	13	12.5	151	44	106
627 - 0135-140	14	13.5	160	47	110
627 - 0145-150	15	14.5	162	50	112

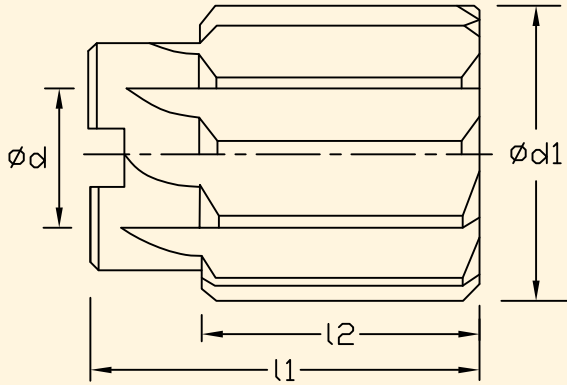
UNI REAM 617

SOLID CARBIDE SHELL REAMER

WITH FIXED PILOTS
(ST. Shank)

The Above Tool Will Be Supplied . Acc to DIN 219

With taper hole 1:30 right hand cutting straight or spiral & bore for H7 fit



Order No.	dia d1	L2	L1	d	Z	Prices
617- 0020	20	40	50	10	8	
617- 0021	21	40	50	10	8	
617- 0022	22	40	50	10	8	
617- 0023	23	40	50	10	8	
617- 0024	24	40	50	10	8	
617- 0025	25	32	45	13	8	
617- 0026	26	32	45	13	8	
617- 0027	27	32	45	13	8	
617- 0028	28	32	45	13	8	
617- 0029	29	32	45	13	8	
617- 0030	30	32	45	13	8	
617- 0031	31	36	50	16	10	
617- 0032	32	36	50	16	10	
617- 0033	33	36	50	16	10	
617- 0034	34	36	50	16	10	
617- 0035	35	36	50	16	10	
617- 0036	36	40	56	19	10	
617- 0037	37	40	56	19	10	
617- 0038	38	40	56	19	10	
617- 0039	39	40	56	19	10	
617- 0040	40	40	56	19	10	
617- 0041	41	40	56	19	10	
617- 0042	42	40	56	19	10	
617- 0043	43	45	63	22	12	
617- 0044	44	45	63	22	12	
617- 0045	45	45	63	22	12	
617- 0046	46	45	63	22	12	
617- 0047	47	45	63	22	12	

Contd

Contd

(UNI REAM 617) SOLID CARBIDE SHELL REAMER

Order No.	d1	L2	L1	d	Z	Prices
617- 0048	48	45	63	22	12	
617- 0049	49	45	63	22	12	
617-0050	50	45	63	22	12	
617- 0052	52	50	71	27	12	
617- 0055	55	50	71	27	12	
617- 0056	56	50	71	27	12	
617- 0058	58	50	71	27	12	
617- 0060	60	50	71	27	12	
617- 0062	62	56	80	32	14	
617- 0065	65	56	80	32	14	
617- 0068	68	56	80	32	14	
617- 0070	70	56	80	32	14	
617- 0072	72	63	90	40	14	
617- 0075	75	63	90	40	14	
617- 0078	78	63	90	40	14	
617- 0080	80	63	90	40	14	
617- 0082	82	63	90	40	14	
617- 0085	85	63	90	40	14	
617- 0088	88	71	100	50	16	
617- 0090	90	71	100	50	16	
617- 0092	92	71	100	50	16	
617- 0095	95	71	100	50	16	
617- 0098	98	71	100	50	16	
617- 0100	100	71	100	50	16	

UNI REAM 602

SOLID CARBIDE LUGGED MACHINE REAMER

TAPER SHANK

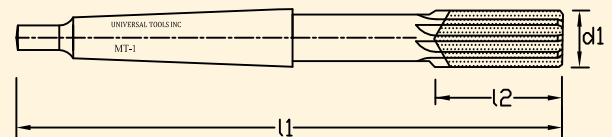
GEOMETRY AND APPLICATION

Type : Left hand helix Similar DIN 208 form B

Tolerance : For H7 fit. Unequal spacing of teeth MT taper.

APPLICATION : General purpose & high tensile. To produce holes of precise roundness & excellent surface finish. Available on request with internal through coolant or any other taper.

Also offered on intermediate size on request.



Order No.	d1	No. Of	L1	L2	MT	Prices
602- 0020	2.00	6	133	20.0	1	
602- 0030	3.00	6	133	20.0	1	
602- 0040	4.00	6	133	20.0	1	

Contd

Contd

(UNI REAM 602) SOLID CARBIDE
LUGGED MACHINE REAMER

Order No.	d1	No. Of	L1	L2	MT	Prices
602- 0050	5.00	6	133	23.0	1	
602- 0060	6.00	6	138	26.0	1	
602- 0065	6.50	6	138	26.0	1	
602- 0070	7.00	6	150	31.0	1	
602- 0075	7.50	6	150	31.0	1	
602- 0080	8.00	6	156	33.0	1	
602- 0085	8.50	6	156	33.0	1	
602- 0090	9.00	6	162	36.0	1	
602- 0095	9.50	6	162	36.0	1	
602- 0100	10.00	6	168	38.0	1	
602- 0110	11.00	6	175	41.0	1	
602- 0120	12.00	6	182	44.0	1	
602- 0130	13.00	6	182	44.0	1	
602- 0140	14.00	8	189	47.0	1	
602- 0150	15.00	8	204	50.0	1	
602- 0160	16.00	8	210	52.0	2	
602- 0170	17.00	8	214	54.0	2	
602- 0180	18.00	8	219	56.0	2	
602- 0190	19.00	8	223	58.0	2	
602- 0200	20.00	8	228	60.0	2	
602- 0210	21.00	6	232	60.0	2	
602- 0220	22.00	6	237	64.0	2	
602- 0200	23.00	6	241	66.0	2	
602- 0240	24.00	8	268	68.0	2	
602- 0250	25.00	8	268	68.0	3	
602- 0260	26.00	8	273	73.0	3	
602- 0270	27.00	8	277	71.0	3	
602- 0280	28.00	8	277	71.0	3	
602- 0300	30.00	8	281	73.0	3	
602- 0320	32.00	8	317	77.0	4	
602- 0340	34.00	8	321	78.0	4	
602- 0350	35.00	8	321	78.0	4	
602- 0360	36.00	8	325	79.0	4	
602- 0400	40.00	8	329	81.0	4	
602- 0420	42.00	8	333	82.0	4	
602- 0440	44.00	8	336	83.0	4	
602- 0450	45.00	8	336	83.0	4	
602- 0460	46.00	8	340	84.0	4	
602- 0470	47.00	8	340	84.0	4	
602- 0480	48.00	8	344	86.0	4	
602- 0500	50.00	8	344	86.0	4	

UNI REAM 603

SOLID CARBIDE BURNISHING REAMERS

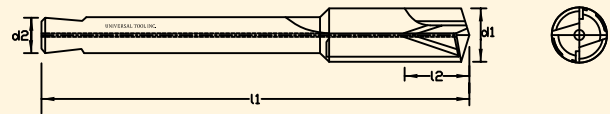
(THROUGH COOLANT)

GEOMETRY AND APPLICATION

Angle: 6°/ chamfer 5°/ 45° Design as specified acc. DIN 1420. With 2 cutting edge, thro coolant **

Reaming of exact holes. if a very high tool life and very good surface finish is Required e.g. for the manufacture in series or on transfer lines. Use 10 to 12% more coolant oil.

Also offered on intermediate sizes on request.



ORDER NO	d1 h7	Range from to	d2 h6	L1	L2	Z	PRICES
603-0040	4.00	3.75-4.25	6.00	56	20	2	
603-0050	5.00	4.75-5.25	6.00	63	22	2	
603-0055	5.50	5.25-5.75	6.00	63	22	2	
603-0060	6.00	5.75-6.25	6.00	63	22	2	
603-0080	8.00	7.50-8.50	8.00	71	25	2	
603-0090	9.00	8.50-9.50	8.00	71	25	2	
603-0100	10.50	9.50-10.50	10.00	71	25	2	
603-0110	11.00	10.5-11.50	10.00	80	28	2	
603-0120	12.00	11.5-12.50	10.00	80	28	2	

UNI REAM 604

CARBIDE TIPPED BURNISHING REAMERS

(ADJUSTABLE)

With 3 cutting edge and burnishing pads at each cutting edge. thro coolant

Acc. UT standard, straight fluted.

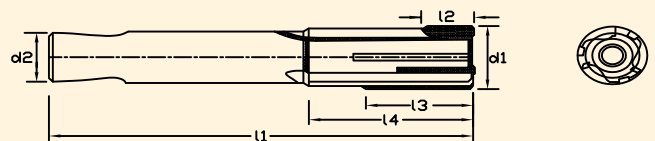
GEOMETRY AND APPLICATION

Chamfer: short profile: standard / side rack angle : 6 degrees / Design as

specified acc. DIN 1420

Reaming of exact holes, if a very high tool life and vary good surface finish is Required.

e.g. for the manufacture in series or transfer lines. Best drilling geometry, best economy excellent hole quality with 10% and more oil



Contd

Contd

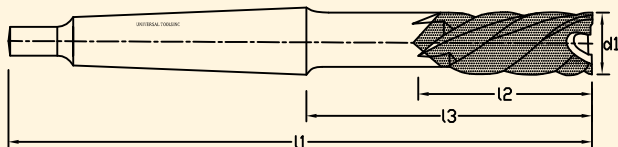
(UNI REAM 604) CARBIDE TIPPED BURNISHING REAMERS ADJUSTABLE

Order No.	d1 h7	d1 Range	d2 h6	L1	L2	L3	L4	Prices
604-0080	8.00	7.50-8.50	16	120	12	18	25	
604-0090	9.00	8.50-9.50	16	120	12	18	25	
604-0100	10.50	9.51-10.61	16	120	12	18	25	
604-0110	11.00	10.61-11.80	16	120	12	18	25	
604-0120	12.00	11.81-12.50	16	120	12	18	25	
604-0130	13-15	12.51-15.00	20	130	15	21	30	
604-0160	16-18	15.01-18.00	20	130	15	21	30	
604-0190	19-22	18.01-22.40	20	150	15	21	30	
604-0240	24-26	22.41-26.50	25	150	15	21	30	
604-0270	27-30	26.51-30.00	25	160	15	21	30	
604-0310	31-35	30.01-35.50	25	160	18	27	35	
604-0360	36-40	35.51-40.00	25	180	18	27	35	

UNI REAM 605

SOLID CARBIDE LUGGED UNIMILL REAMERS

Note: Tool is supplied in taper shank in carbide lugged design.
Available on request: TiN coated Extra long length Any intermediate.



Order No.	d1	No of OAL Flute Z	L1	L2	L3	MT No	Cutting allow ance	Prices
605-0015	15	6	160	29	80	MT2	0.2~1.5	
605-0016	16	6	165	30	85	MT2	0.2~1.5	
605-0017	17	6	165	30	85	MT2	0.2~1.5	
605-0018	18	6	170	30	90	MT2	0.2~2.0	
605-0019	19	6	170	30	90	MT2	0.2~2.0	
605-0020	20	6	180	30	100	MT2	0.2~2.0	
605-0021	21	6	180	33.5	100	MT2	0.2~2.0	
605-0022	22	6	190	33.5	110	MT2	0.2~2.0	
605-0023	23	6	195	33.5	115	MT2	0.2~2.5	
605-0024	24	6	225	33.5	126	MT3	0.2~2.5	
605-0025	25	6	225	33.5	126	MT3	0.2~2.5	

Contd

Contd

(UNI REAM 605) SOLID CARBIDE LUGGED UNIMILL REAMERS

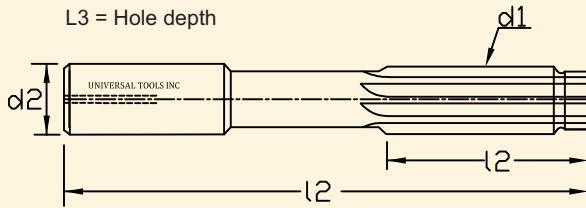
Order No.	d1	No of OAL Flute Z	L1	L2	L3	MT No	Cutting allow ance	Prices
605-0026	26	8	225	33.5	126	MT3	0.2~2.5	
605-0027	27	8	225	33.5	126	MT3	0.2~2.5	
605-0028	28	8	230	39	131	MT3	0.2~2.5	
605-0029	29	8	230	39	131	MT3	0.2~2.5	
605-0030	30	8	235	39	136	MT3	0.2~2.5	
605-0031	31	8	235	39	136	MT3	0.2~2.5	
605-0032	32	8	245	39	146	MT3	0.2~2.5	
605-0033	33	8	270	39	146	MT4	0.2~2.5	
605-0034	34	8	275	41	151	MT4	0.2~2.5	
605-0035	35	8	275	41	151	MT4	0.2~2.5	
605-0036	36	8	275	41	151	MT4	0.3~3.0	
605-0037	37	8	275	46	151	MT4	0.3~3.0	
605-0038	38	8	275	46	151	MT4	0.3~3.0	
605-0039	39	8	275	46	151	MT4	0.3~3.0	
605-0040	40	8	275	46	151	MT4	0.3~3.0	
605-0041	41	8	275	49	151	MT4	0.3~3.0	
605-0042	42	8	275	49	151	MT4	0.3~3.5	
605-0043	43	8	275	49	151	MT4	0.3~3.5	
605-0044	44	12	275	49	151	MT4	0.3~3.5	
605-0045	45	12	275	49	151	MT4	0.3~3.5	
605-0046	46	12	275	51	151	MT4	0.3~3.5	
605-0047	47	12	275	51	151	MT4	0.3~3.5	
605-0048	48	12	280	51	156	MT4	0.3~3.5	
605-0049	49	12	280	56	156	MT4	0.3~3.5	
605-0050	50	12	290	56	166	MT4	0.3~4.0	
605-0055	55	12	290	56	166	MT4	0.3~4.0	
605-0060	60	12	290	56	171	MT4	0.3~4.0	
605-0065	65	12	330	56	174	MT5	0.3~5.0	
605-0070	70	12	330	56	174	MT5	0.3~5.0	
605-0075	75	12	330	56	174	MT5	0.3~5.0	
605-0080	80	24	340	56	184	MT5	0.3~5.0	
605-0085	85	24	340	56	184	MT5	0.3~5.0	

World Class Tools From
World Class Universal Tool

UNI REAMER 621

SOLID CARBIDE SAC REAMER

NOTE : Intermediate size on request.
Also available on request in thro' coolant.



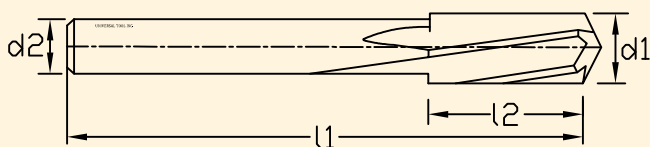
Order No.	d1/h7	L3	L2	L1	Z	d2/h6	Prices
621-0040	4	31	10	74	4	6	
621-0045	4.5	31	10	74	4	6	
621-0050	5	34	12	75	4	6	
621-0055	5.5	34	12	75	4	6	
621-0060	6	53	12	93	6	6	
621-0065	6.5	54	12	93	6	6	
621-0070	7	52	16	93	6	8	
621-0075	7.5	52	16	93	6	8	
621-0080	8	53	16	93	6	8	
621-0085	8.5	54	16	93	6	8	
621-0090	9	60	20	105	6	10	
621-0095	9.5	60	20	105	6	10	
621-0010A	10	61	20	105	6	10	
621-0010B	10.5	68	20	120	6	12	
621-0011	11	70	24	120	6	12	
621-0012	12	70	24	120	6	12	
621-0014	14	70	26	120	6	16	
621-0016	16	80	26	130	6	16	
621-0018	18	80	36	130	6	20	
621-0020	20	98	35	150	6	20	
621-0022	22	98	35	150	8	20	
621-0025	25	98	35	150	8	25	
621-0030	30	100	40	160	8	32	
621-0032	32	105	40	165	8	32	

UNI REAMER 622

CERMET-SOLID REAMER

NOTE : Intermediate size on request.
Also available on request in thro' coolant.

L3 = Hole depth



Contd

(UNI REAMER 622) CERMET-SOLID REAMER

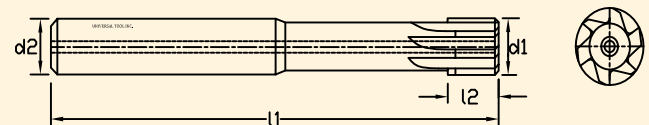
Order No.	d1/h7	L3	L2	L1	Z	d2/h6	Prices
622-0060	6	38	10	76	4	6	
622-0070	7	64	10	101	6	6	
622-0080	8	72	10	111	6	8	
622-0090	9	74	10	111	6	8	
622-0010	10	72	10	115	6	10	
622-0011	11	76	12	117	6	10	
622-0012	12	77	12	125	6	12	
622-0013	13	80	14	127	6	12	
622-0014	14	80	14	127	6	12	
622-0015	15	84	16	129	6	12	
622-0016	16	84	16	129	6	12	

UNI REAMER 623

CERMET-(PT) REAMER

NOTE : Intermediate size on request.
Also available on request in thro' coolant.

L3 = Hole depth



Order No.	d1/h7	L3	L2	L1	Z	d2/h6	Prices
623-0008	8	75	16	117	4	8	
623-0009	9	81	19	125	6	8	
623-0010	10	87	19	133	6	10	
623-0011	11	96	19	142	6	10	
623-0012	12	105	19	151	6	10	
623-0013	13	105	19	151	6	10	
623-0014	14	110	19	160	6	12.5	
623-0015	15	112	19	162	6	12.5	
623-0016	16	120	22	170	6	12.5	
623-0017	17	123	22	175	6	14	
623-0018	18	130	22	182	6	14	
623-0019	19	131	22	189	6	16	
623-0020	20	137	22	195	6	16	

Contd

UNI REAM 606

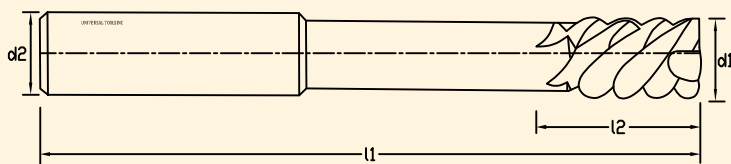
SOLID CARBIDE UNI MILL REAMERS

NOTE : THIS TOOL IS SUPPLIED IN SOLID CARBIDE STRAGHT SHANK FOR CUTTING AT VERY HIGH & FEED RATES.

Available on request:

- TiN coated & TiAN coated.
- Extra Long size.
- Any intermediate dia.
- Any special length & flute length.
- Intermediate sizes.

While ordering please mention Order No. & basic dia.



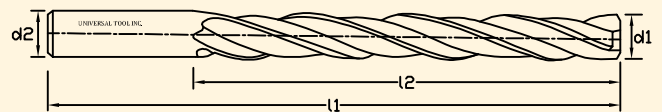
UNI C-DRILL 607

SOLID CARBIDE CORE DRILL

NOTE : ABOVE TOOL WILL BE SUPPLIED IN ST. SHANK.

Also offered on request in :

- Helical right hand / left hand St. flute.
- Lug type construction with Morse taper / St. shank in steel.
- TiN Coated & TiAIN coated.
- Extra long size.
- Any special length & flute length
- With thru. Coolant holes
- Intermediate sizes



Order No.	d1	Z	OAL L1	FL L2	Shank dia d2	Cutting allowance	Prices
606-0050	5	3	75	22	5	0.2~0.6	
606-0060	6	3	100	25	6	0.2~0.6	
606-0070	7	3	110	25	8	0.2~0.6	
606-0080	8	3	125	25	8	0.2~0.8	
606-0090	9	3	135	25	10	0.2~0.8	
606-0100	10	3	150	29	10	0.2~1.0	
606-0110	11	3	155	29	12	0.2~1.0	
606-0120	12	3	160	29	12	0.2~1.2	
606-0130	13	3	165	29	12	0.2~1.2	
606-0140	14	3	170	29	16	0.2~1.5	
606-0150	15	3	170	30	16	0.2~1.5	
606-0160	16	3	170	30	16	0.2~1.5	
606-0180	18	3	175	30	18	0.2~1.6	
606-0200	20	3	175	30	20	0.2~1.6	
606-0220	22	3	185	32	20	0.2~1.8	
606-0250	25	3	185	32	20	0.2~1.8	
606-0280	28	3	185	32	20	0.2~1.8	
606-0300	30	3	190	32	20	0.2~1.8	

Order No.	Range dia d1	FL L2	OAL L1	Prices d2
607 - 0050	1 - 1.5	12	40	1.5
607 - 0016	1.6 - 1.9	12	40	2
607 - 0020	2.0 - 2.5	14	50	3
607 - 0026	2.6 - 3.0	15	60	3
607 - 0031	3.1 - 4.0	18	60	4
607 - 0041	4.1 - 5.0	20	75	5
607 - 0051	5.1 - 6.0	25	80	6
607 - 0061	6.1 - 7.0	30	85	7
607 - 0071	7.1 - 8.0	30	85	8
607 - 0081	8.1 - 9.0	35	90	9
607 - 0091	9.1 - 10.0	35	100	10
607 - 0101	10.1 - 11.0	40	100	11
607 - 0111	11.1 - 12.0	40	100	12
607 - 0120	12.1 - 13.0	40	100	13
607 - 0130	13.1 - 14.0	40	100	14
607 - 0140	14.1 - 15.0	45	100	15
607 - 0150	15.1 - 16.0	45	100	16
607 - 0160	16.1 - 17.0	45	100	17
607 - 0170	17.1 - 18.0	45	100	18
607 - 0180	18.1 - 19.0	45	100	19
607 - 0190	19.1 - 20.0	45	100	20
607 - 0200	20.1 - 21.0	45	100	21
607 - 0210	21.1 - 22.0	45	100	22
607 - 0220	22.1 - 23.0	45	100	23
607 - 0230	23.1 - 24.0	45	100	24
607 - 0240	24.1 - 25.0	45	100	25
607 - 0250	25.1 - 30.0	60	120	25
607 - 0300	30.1 - 36.0	80	150	32