

UNI SAW 741

SOLID CARBIDE SLITTING SAWS

Acc. To DIN 1838 A, coarse pitch

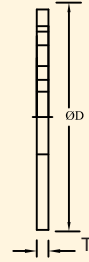
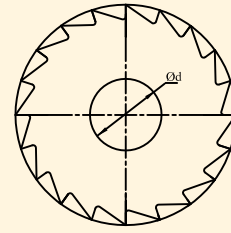
Clearance ground on both sides (secondary cutting edges)/
rack angle 10°

APPLICATION

For sawing, slitting & milling of cast iron, malleable cast iron, brass, aluminium with

Silicon % graphite, plastics, glass and carbon fiber.

For sawing, slitting and milling of steel & steel casting for (B<900 M/mm²)



CUTTING DIAMETER D	15	20	25	30	40	50	63	80	100	125	Prices
BORE DIAMETER d	5	5	8	8	10	13	16	22	22	22	
Order	T	No. of Teeth									
741 – 0020	0.20	20	20	20	30	40	48				
741 – 0025	0.25	20	20	20	30	40	48				
741 – 0030	0.30	20	20	20	30	40	48	64	64		
741 – 0035	0.35	20	20	20	30	40	48	64	64		
741 – 0040	0.40	20	20	20	30	40	48	64	64		
741 – 0045	0.45	20	20	20	30	40	48	64	64		
741 – 0050	0.50	20	20	20	30	40	48	64	64	80	
741 – 0060	0.60	20	20	20	30	40	48	64	64	80	
741 – 0070	0.70	20	20	20	30	40	48	64	64	80	
741 – 0080	0.80	20	20	20	24	32	40	48	64	64	80
741 – 0090	0.90	20	20	20	24	32	40	48	48	64	64
741 – 0100	1.00	20	20	20	24	32	40	48	48	64	64
741 – 0110	1.10	20	20	20	24	32	40	40	48	64	64
741 – 0120	1.20	20	20	20	24	32	40	40	48	64	64
741 – 0130	1.30	20	20	20	24	32	32	40	48	48	64
741 – 0140	1.40	20	20	20	24	32	32	40	48	48	64
741 – 0150	1.50	20	20	20	24	32	32	40	48	48	64
741 – 0160	1.60	20	20	20	24	32	32	40	48	48	64
741 – 0170	1.70	20	20	20	24	32	32	40	40	48	64
741 – 0180	1.80	20	20	20	24	32	32	40	40	48	64
741 – 0190	1.90	20	20	20	24	32	32	40	40	48	64
741 – 0200	2.00	20	20	20	24	32	32	40	40	48	64
741 – 0250	2.50	20	20	20	24	32	32	32	40	48	48
741 – 0300	3.00	20	20	20	24	32	24	32	40	40	48
741 – 0400	4.00	20	20	20	24	32	24	32	32	40	48
741 – 0500	5.00	20	20	20	24	32	24	24	32	40	40
741 – 0600	6.00	20	20	20	24	32	20	24	32	32	40
741 – 0700	7.00	20	20	20	24	32	20	24	32	32	40
741 – 0800	8.00	20	20	20	24	32	20	24	32	32	40
741 – 0900	9.00	20	20	20	24	32	20	24	32	32	40
741 – 1000	10.00	20	20	20	24	32	20	24	32	32	40
741 – 1200	12.00	20	20	20	24	32	20	24	32	32	40
741 – 1400	14.00	20	20	20	24	32	20	24	32	32	40
741 – 1600	16.00	20	20	20	24	32	20	24	32	32	40